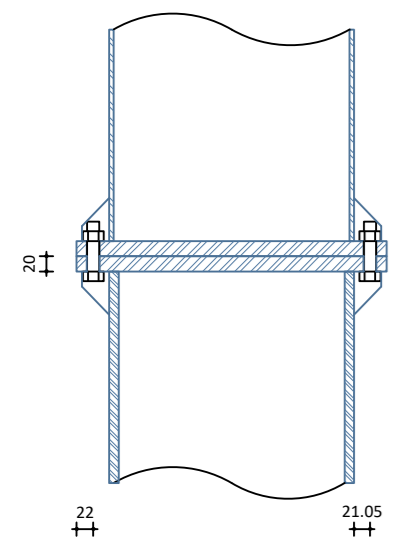


PART. 1 Rastremazione pilastro

Scala 1:10

Giunto colonna TUBO 323.9x12.5 - 323.9x5.9

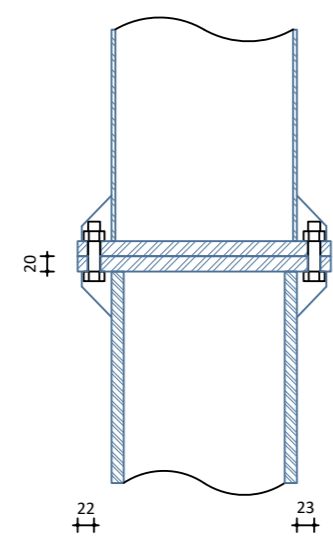
Viti cl. 8.8 Dadi 8 Diametro 16 mm
Piastre spessore 20 mm, Nervature spessore 6 mm, Saldature a completa penetrazione



Sezione longitudinale 2-2

Giunto colonna TUBI 245x16 - 245x5

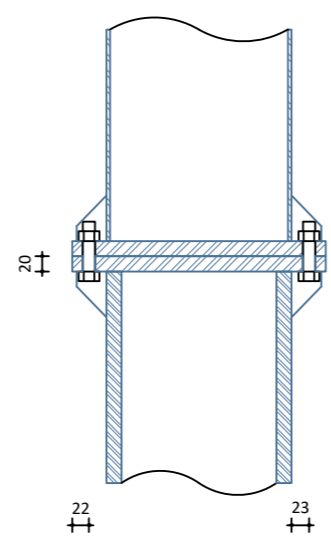
Viti cl. 8.8 Dadi 8 Diametro 16 mm
Piastre spessore 20 mm, Nervature spessore 6 mm, Saldature a completa penetrazione



Sezione longitudinale 2-2

Giunto colonna TUBI 245x20 - 245x5

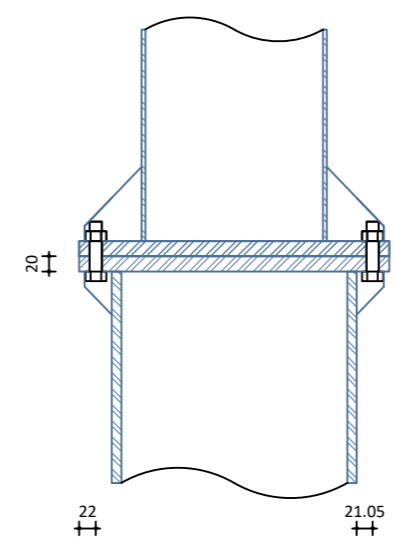
Viti cl. 8.8 Dadi 8 Diametro 16 mm
Piastre spessore 20 mm, Nervature spessore 6 mm, Saldature a completa penetrazione



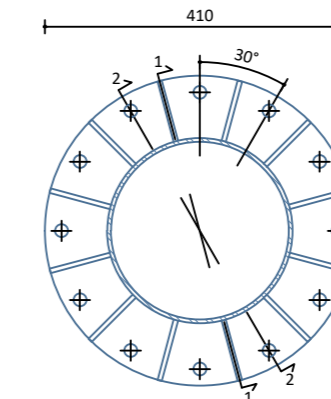
Sezione longitudinale 2-2

Giunto colonna TUBO 323.9x12.5/245x5

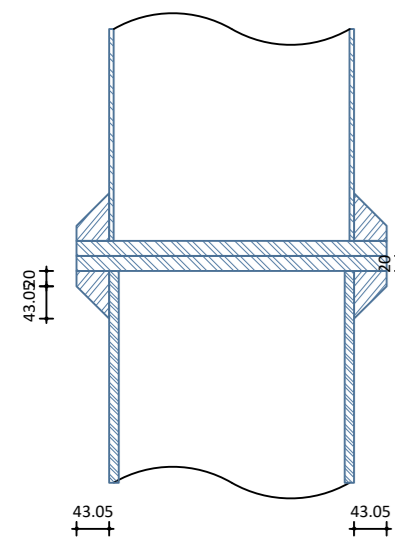
Viti cl. 8.8 Dadi 8 Diametro 16 mm
Piastre spessore 20 mm, Nervature spessore 6 mm, Saldature a completa penetrazione



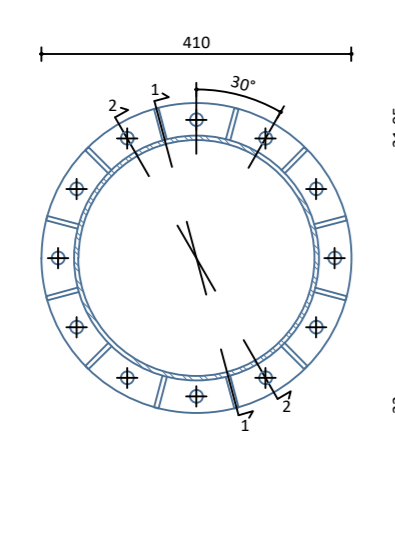
Sezione longitudinale 2-2



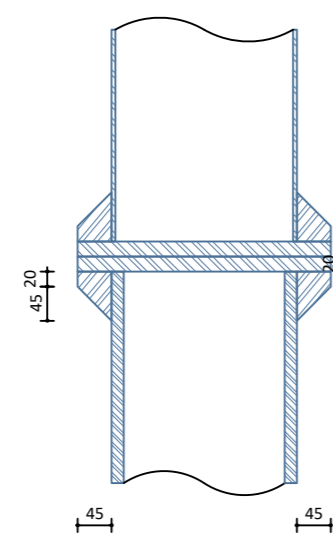
Sezione trasversale



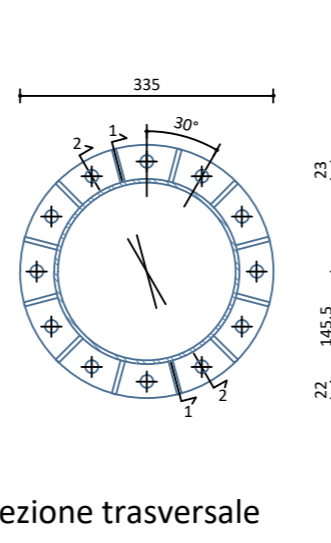
Sezione longitudinale 1-1



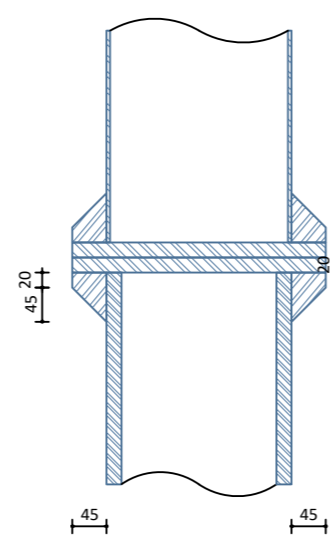
Sezione trasversale



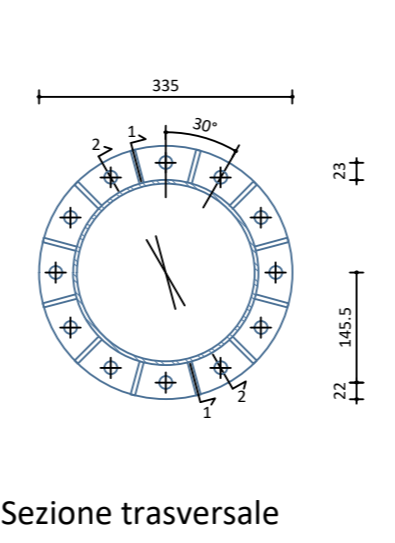
Sezione longitudinale 1-1



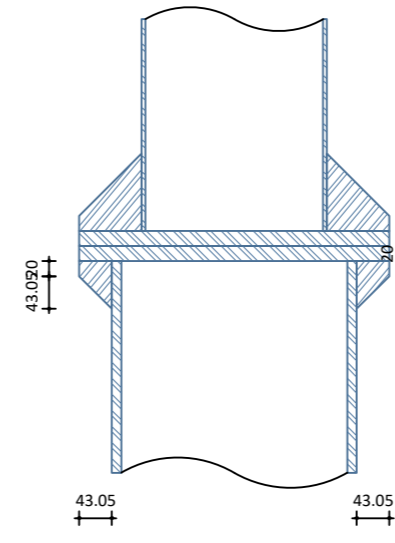
Sezione trasversale



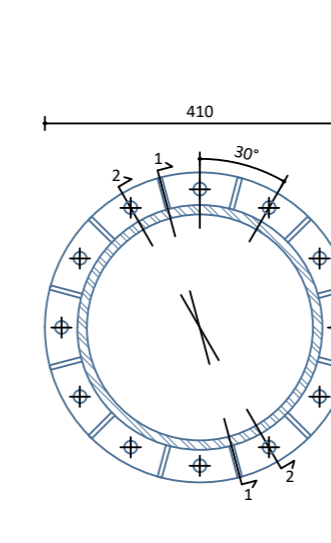
Sezione longitudinale 1-1



Sezione trasversale



Sezione longitudinale 1-1



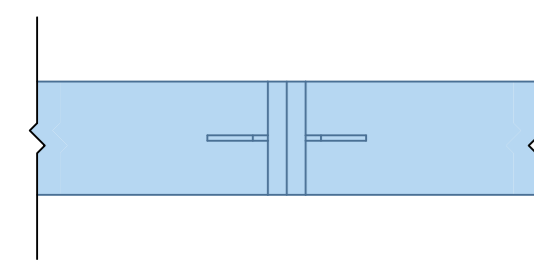
Sezione trasversale

PART. 2 Giunti su travi principali e secondarie

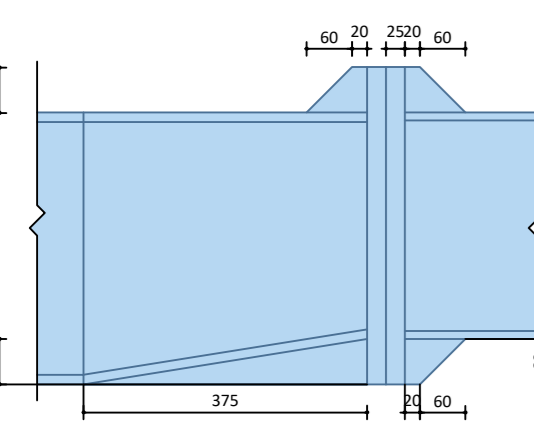
Scala 1:10

Giunto trave IPE 300/IPE360

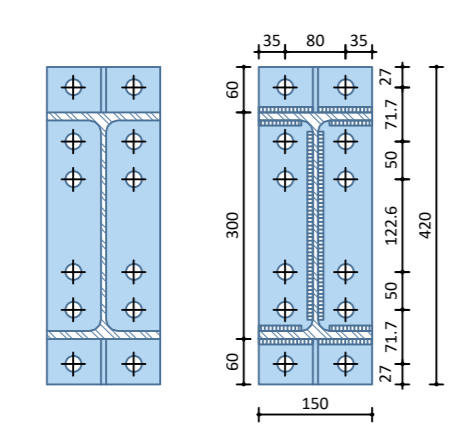
Viti cl. 8.8 Dadi 8 Diametro 20 mm
Piastre spessore 25 mm, Nervature spessore 7 mm, Saldature spessore z = 7 mm



Vista superiore



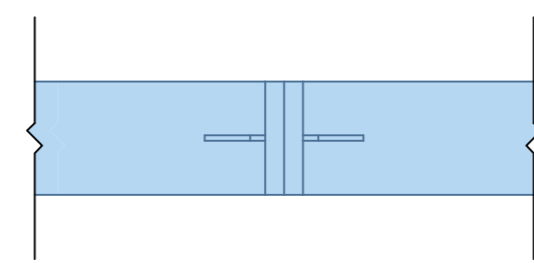
Vista laterale



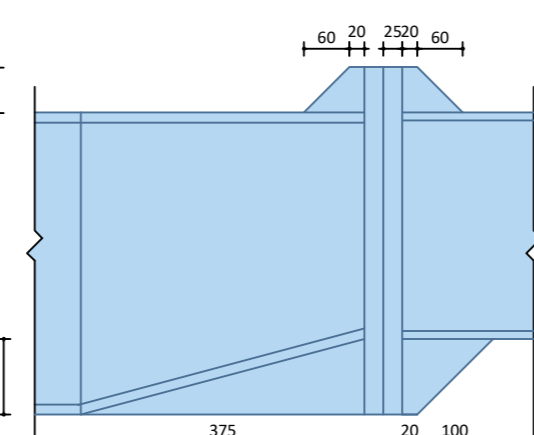
Sezione

Giunto trave IPE 300/IPE400

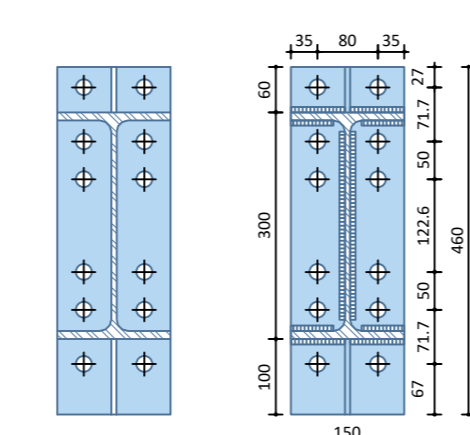
Viti cl. 8.8 Dadi 8 Diametro 20 mm
Piastre spessore 25 mm, Nervature spessore 7 mm, Saldature spessore z = 7 mm



Vista superiore



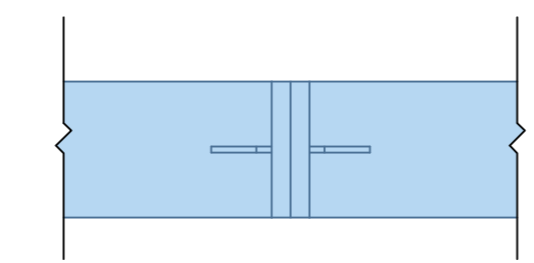
Vista laterale



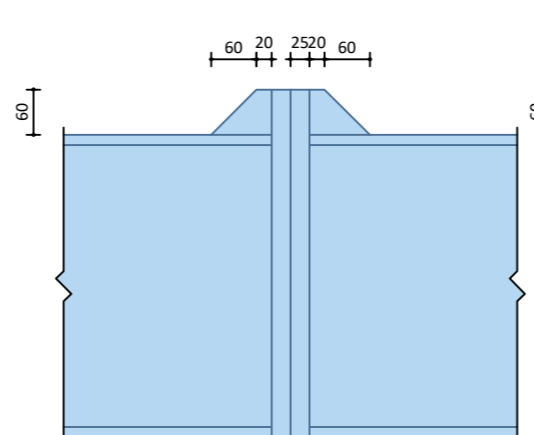
Sezione

Giunto trave IPE 400

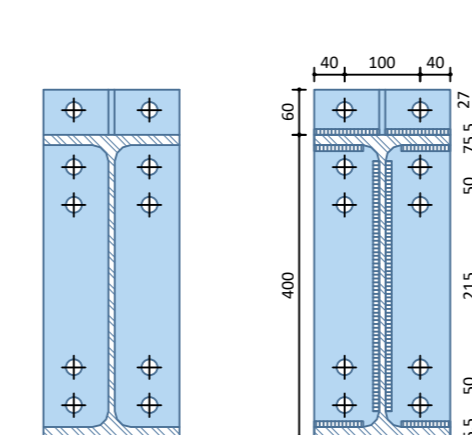
Viti cl. 8.8 Dadi 8 Diametro 20 mm
Piastre spessore 25 mm, Nervature spessore 8 mm, Saldature spessore z = 8 mm



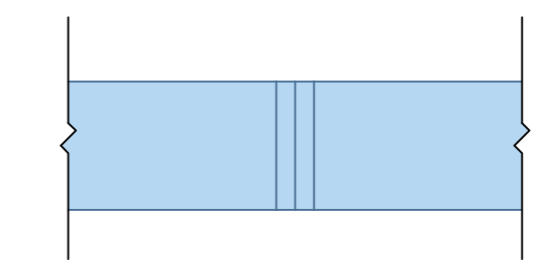
Vista superiore



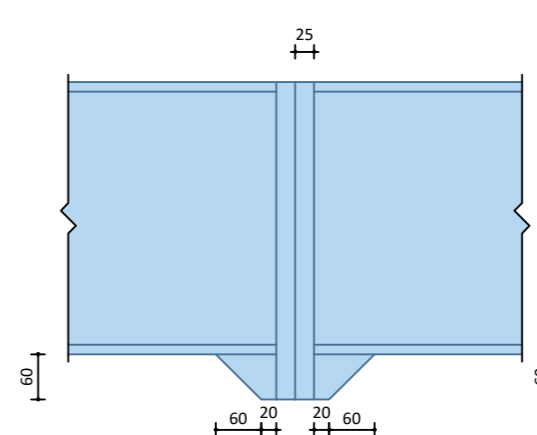
Vista laterale



Sezione



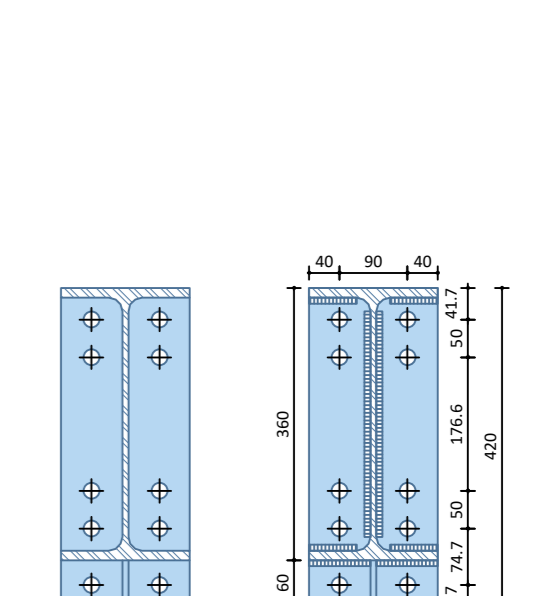
Vista superiore



Vista laterale

Giunto trave IPE 360

Viti cl. 8.8 Dadi 8 Diametro 20 mm
Piastre spessore 25 mm, Nervature spessore 8 mm, Saldature spessore z = 8 mm



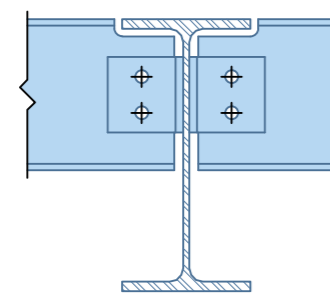
Sezione

PART. 3 Collegamenti arcarecci

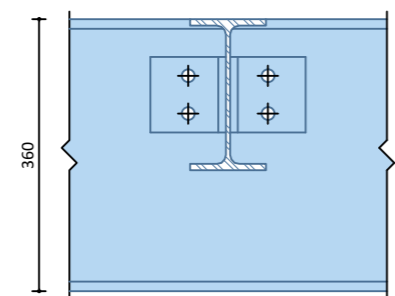
Scala 1:10

Nodi su Fili Fissi 2-3-4

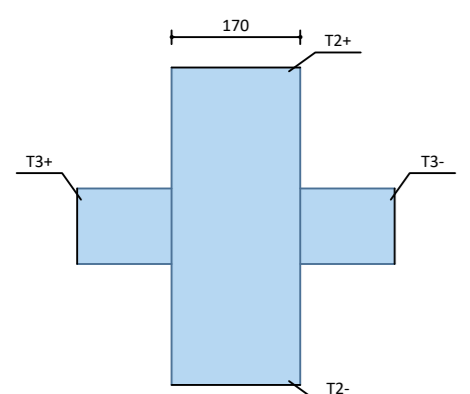
- (T 2-2) IPE 360
- (T 3+) IPE 200 Viti cl. 8.8 Dadi 8 Diametro 16 mm Saldature spessore z = 6 mm
- (T 3-) IPE 200 Viti cl. 8.8 Dadi 8 Diametro 16 mm Saldature spessore z = 6 mm



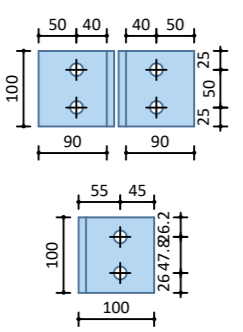
Vista lato 2- 2+



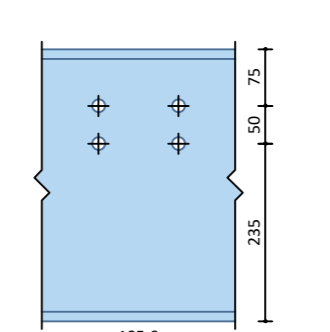
Vista lato 3+ 3-



Pianta



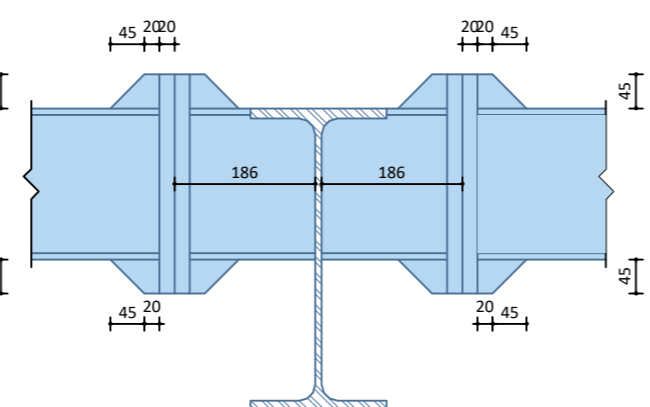
Squadrette: 2 LU 100x10



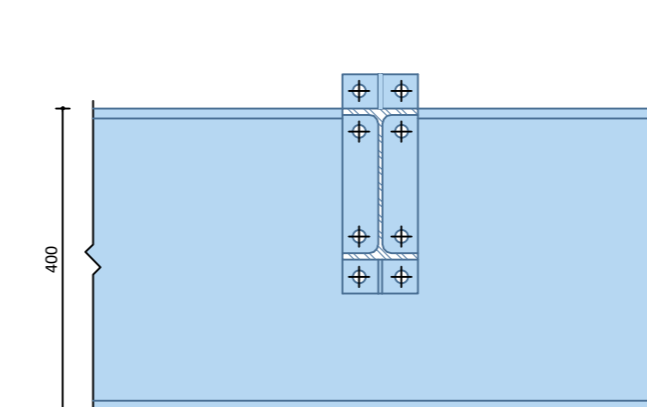
raccordo raggio 10 mm

Nodi su Fili Fissi 1 e 5

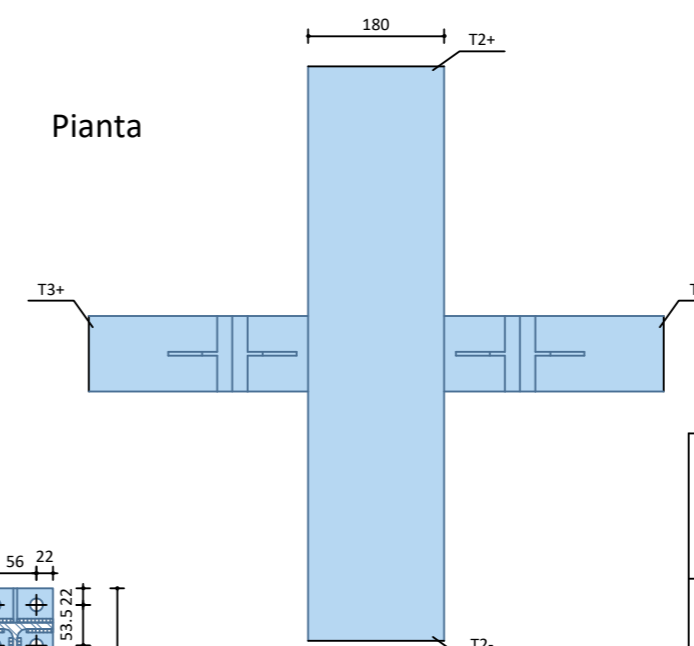
- (T 2-2) IPE 400
- (T 3+) IPE 200 Viti cl. 8.8 Dadi 8 Diametro 16 mm Saldature spessore 5 mm Nervature spessore z = 5 mm
- (T 3-) IPE 200 Viti cl. 8.8 Dadi 8 Diametro 16 mm Saldature spessore 5 mm Nervature spessore z = 5 mm



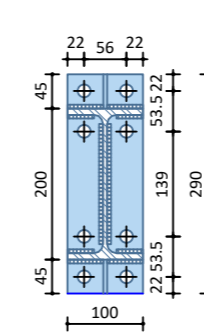
Vista lato 2-



Vista lato 3+



Pianta



Flangia Trave 3+ (spessore 20 mm)

COMMITTENTE: COMUNE DI ANCONA	IMPRESA:	INDIRIZZO: PIAZZA PALOMBARA VIA DELL'ARTIGIANATO VIA DELL'INDUSTRIA	SITO/LOCALITA' ANCONA (AN)
PROG. ARCHITETTONICA: ARCH. OLIVA BATINI	DL ARCHITETTONICA:	PROG. STRUTTURALE: ING. MICHELE VIGLIONE	COORD. SICUREZZA:
Questo disegno è di proprietà ISP Engineering S.r.l. che se ne riserva tutti i diritti. La copia, una volta prelevata dal sito, è in stato non controllato; prima dell'utilizzo verificare la validità della revisione.			
COD. PRATICA 042021_002_2017	RIQUALIFICAZIONE PIAZZA TRA VIA DELL'ARTIGIANATO E VIA DELL'INDUSTRIA QUARTIERE PALOMBARA - PROGETTO ESECUTIVO		
SCALA varie	PARTICOLARI COSTRUTTIVI		
DATA 06/03/18			
REV.			

S.05b

IND. DI REV.